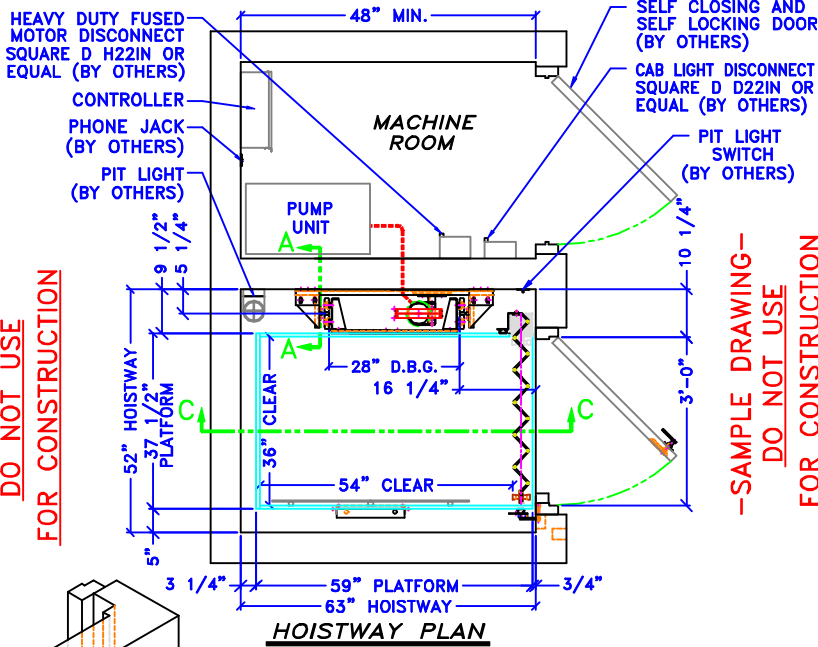
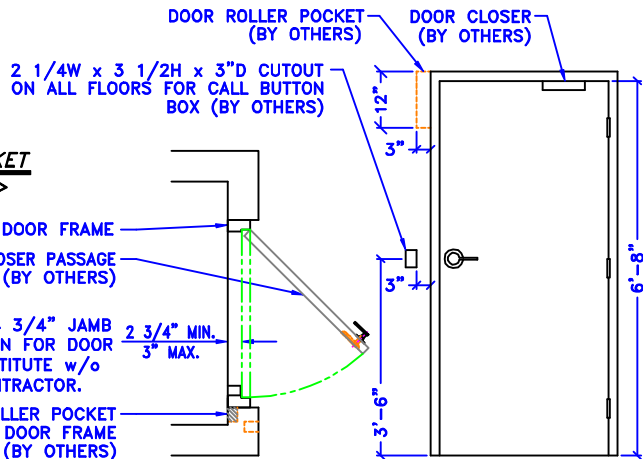
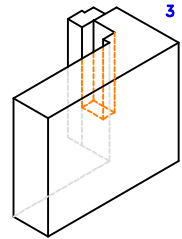


-SAMPLE DRAWING-  
DO NOT USE  
FOR CONSTRUCTION

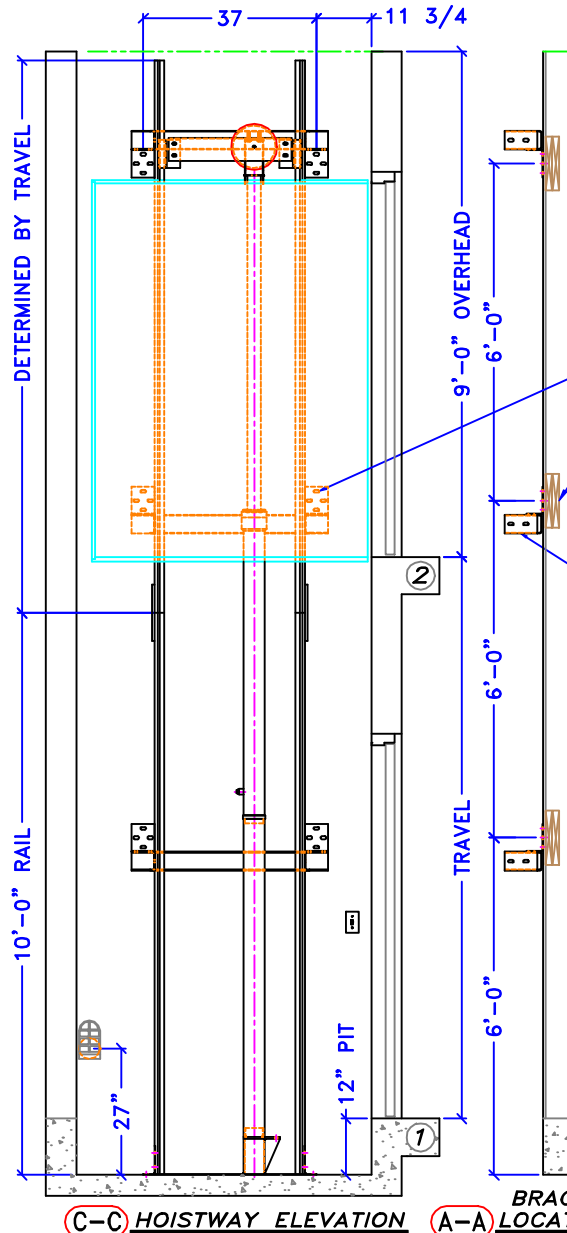


-SAMPLE DRAWING-  
DO NOT USE  
FOR CONSTRUCTION

**DOOR ROLLER POCKET**  
<ISOMETRIC VIEW>



**NOTE:**  
PROVIDE WALL CONSTRUCTION SUITABLE FOR ATTACHMENT OF RAIL BRACKETS MIN. DOUBLED 2 x 12 x (THE FULL WIDTH OF HOISTWAY) AT ELEVATIONS SHOWN. WALL CONSTRUCTION @ EACH POINT MUST BE CAPABLE OF 300# PULLOUT LOADING w/ MAXIMUM DEFLECTION OF 1/8"



-SAMPLE DRAWING-  
DO NOT USE  
FOR CONSTRUCTION

RAIL BRACKETS FASTENED TO WALL w/ LAGG SCREWS 5/16 x 3" LG @ 2plcs PER SIDE PER BRACKET

WOOD STUD & DRYWALL 2pcs 2 x 12 (BY OTHERS)

RAIL BRACKET

-SAMPLE DRAWING-  
DO NOT USE  
FOR CONSTRUCTION

**WORK BY OTHERS**

- TO BE PROVIDED BY OWNER AND/OR GENERAL CONTRACTOR:**
- Legal hoistway of proper size, plumb within 1" per 100', and pit of proper depth.
  - A 12" square blockout in elevator pit floor, to be filled when plunger assembly has been installed.(X3)
  - 10" PVC cylinder casing per drawings.(X3)
  - Suitable machine room with legal access & clearances, properly heated & ventilated. Temperature not to exceed 35°C(95°F).
  - Hoistway guard & barricades during installation.
  - Supports for rail fastenings where specified.
  - Venting of hoistways as required by code.
  - All cutting of walls, floors, of partitions together with all repairs, grouting, patching, and painting made necessary by such cutting or changes.
  - Heavy duty fused main line switch in machine room for each elevator with feeders connected to each controller.
  - Lights, light switch, and convenience outlets in elevator machine room.
  - 120V/10/20amp service & telephone outlet for each elevator connected to controller(s) in elevator machine room for car lights & accessories.
  - Light, light switch, and convenience outlet in elevator pit where required.
  - Finished cab floor coverings.
  - All other equipment necessary & not otherwise called for in elevator contract.

**TIGER LIFT**

MODEL	XS FM	SERVICE	BFID
SPEED	28 FPM	CAPACITY	700
TRAVEL	VERIFY	OPERATION	SPBA
NO. LANDINGS	2	NO. CAR GATES	1
CAB TYPE	STD	CAB COLOR	?
HANDRAIL TYPE	ALUMINUM	CEILING COLOR	WHITE
GATE TYPE	WOODFOLD	GATE FINISH	OK W/VNL
GATE OPERATION	MANUAL	GATE SIZE	36"(R)
FLOOR DESIGNATION	1, 2	FIXTURE FINISH	S.S.#4
ILLUMINATE	X EMERG. LIGHT	MICROPRO.	
SCREW PUMP	AUTO LIGHT	RET. CAM	
FIRE SERVICE	RUPTURE VALVE	IN USE LT	
KEY SW/MOMENT	AUTO LOWER	TANK HT.	
ARRIVAL LIGHT	KEY SW/MAINT	AUTO DOOR	
ARRIVAL GONG	CAR TOP STATION	AUTO GATE	
DOOR MONITOR	POSITION IND.	SOFTWARE	
HARDWARE	PHONE BOX	PHONE	
CAR WEIGHT	-	GROSS WEIGHT	-
RAIL SIZE	6.25"	PLINGER DIAMETER	2.75
MOTOR HP	3.5	PLINGER WALL	.250
MOTOR RPM	1750	MIN. PSI	-
VALVE MODEL	KVP	MAX. PSI	-
PUMP MODEL	20-38	SAFETY MODEL	ECI-A
PUMP GPM	4.33	HOIST CABLE	3/8 Bx19
FEED PIPE	1/2	LINE VOLTAGE	208 1F
BUFFER CAPACITY	750	CONTROL VOLTAGE	24
BUFFER STROKE	2.25	MOTOR STARTING	55
PLATEN EXT.(X3)	-	MOTOR RUNNING	17
INTERLOCK @1	SM LH 90'	INTERLOCK @2	SM LH 90'



JOB NAME: X528 w/ WOODFOLD @2 36 x 54

ADDRESS: -

CITY: -

ARCHITECT: -

CONTRACTOR: -

CUSTOMER: -

REVISIONS: -

DRN. BY: DJB DATE: 05/07/01 DWG# 28\_3654WF2